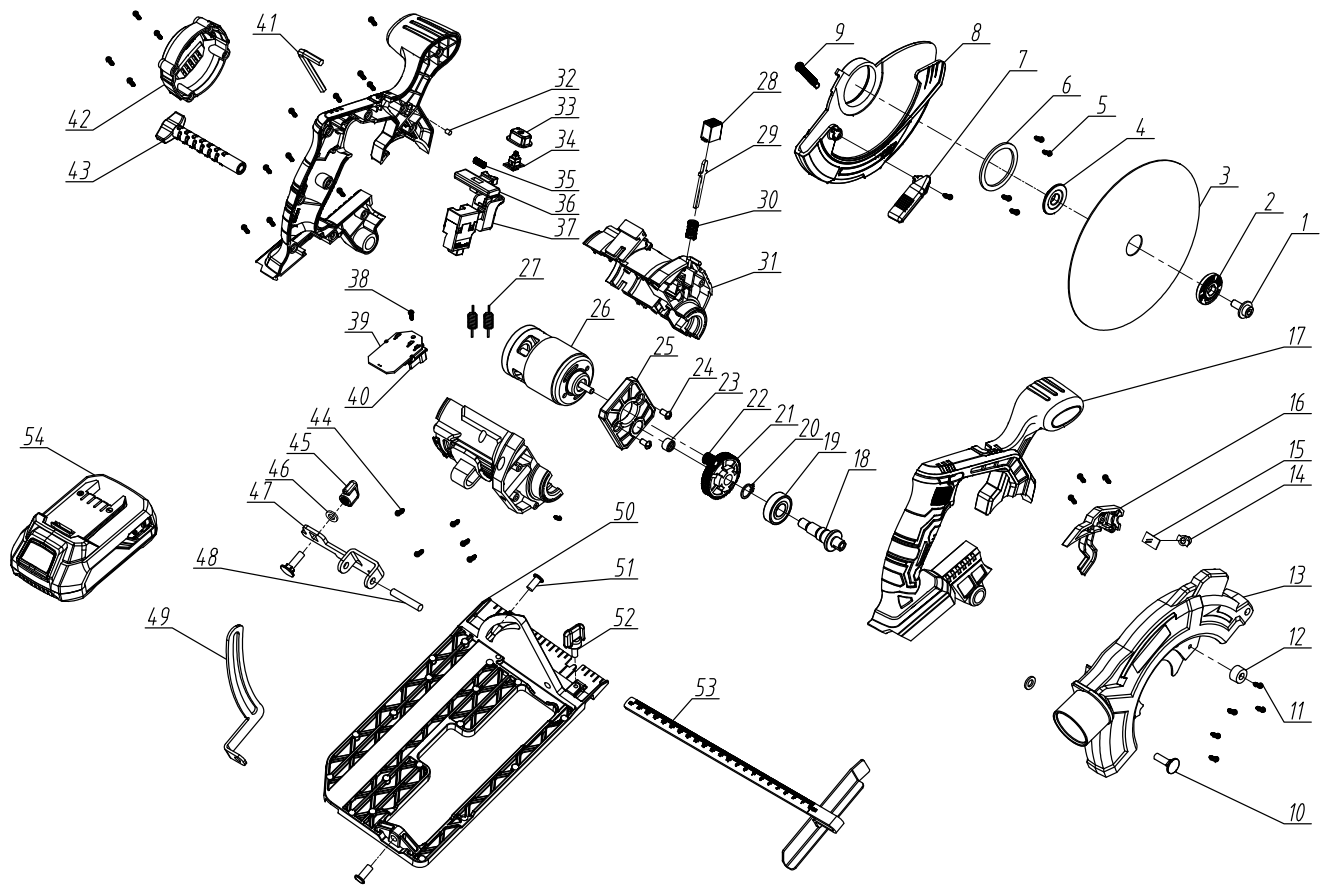


# EXPLODED VIEW OF RDP-SCS20



## PARTS LIST RDP-SCS20

|    |                       |   |     |                         |   |
|----|-----------------------|---|-----|-------------------------|---|
| 1  | Right handle          | 1 | 41  | lower clamp             | 1 |
| 2  | tension disc          | 1 | 42  | blade 185               | 1 |
| 3  | screw ST4*16          | 9 | 43  | upper clamp             | 1 |
| 4  | Switch                | 1 | 44  | blade clamping waser    | 1 |
| 5  | Capacitor 0.22uf      | 1 | 45  | hex screw M8*14         | 1 |
| 6  | Cable clamp           | 1 | 46  | right aluminium mask    | 1 |
| 7  | Left handle           | 1 | 47  | screw M5*12             | 3 |
| 8  | screw ST4*20          | 6 | 48  | red vulcanized fiber    | 2 |
| 9  | Back mask             | 1 | 49  | Depth adjustment block  | 1 |
| 10 | breakage-proof board  | 2 | 50  | Ruler Clamp Screw       | 1 |
| 11 | shell                 | 1 | 51  | depth clamping waser    | 1 |
| 12 | stator settings       | 1 | 52  | Angel Clamp knob        | 1 |
| 13 | screw ST4*53          | 2 | 53  | external circlip plier  | 1 |
| 14 | Baffle Fan            | 1 | 54  | bevel adjustment knob   | 1 |
| 15 | bearing 608           | 1 | 55  | braket rivet            | 2 |
| 16 | brush holder          | 2 | 56  | plate                   | 1 |
| 17 | brusher copper nest   | 2 | 57  | connecting pin          | 1 |
| 18 | carbon brush          | 2 | A1  | square nut              | 2 |
| 19 | armature settings     | 1 | A2  | laser switch assembly   | 1 |
| 20 | bearing 6000          | 1 | A3  | laser switch button     | 1 |
| 21 | rubber column         | 1 | A4  | screw M3*10             | 2 |
| 22 | depth-clamp wrench    | 1 | A5  | cell box                | 1 |
| 23 | left-aluminium mask   | 1 | A6  | cell cover              | 1 |
| 24 | retreating-proof shim | 1 | A7  | laser spring            | 2 |
| 25 | screw M4*16           | 1 | A8  | copper wafer            | 2 |
| 26 | Carriage bolts        | 1 | A9  | laser set               | 1 |
| 27 | Neddle Bearing        | 1 | A10 | laser top               | 1 |
| 28 | external circlip      | 1 | A11 | screw ST3*8             | 3 |
| 29 | gear                  | 1 | A12 | screw ST3*10            | 1 |
| 30 | bearing               | 1 | A13 | screw ST3*10            | 2 |
| 31 | flat key 3*10         | 1 | B1  | depth-clamp wrench      | 1 |
| 32 | internal circlip      | 1 | B2  | depth spanner           | 1 |
| 33 | bearing 6001          | 1 | B3  | depth clamping washer   | 1 |
| 34 | bearing bracket       | 1 | B4  | split washer            | 2 |
| 35 | screw ST4*12          | 4 | B5  | depth clamping screw    | 1 |
| 36 | Spring for low guard  | 1 | C1  | shaft lock spring       | 1 |
| 37 | screw ST4*10          | 1 | C2  | shaft lock              | 1 |
| 38 | working mask          | 1 | C3  | elastic cylindrical pin | 1 |
| 39 | working wrench        | 1 | D1  | soft start board        | 1 |
| 40 | Spiral Spring         | 1 | D2  | post head               | 1 |